



PDRG1 Polyclonal Antibody

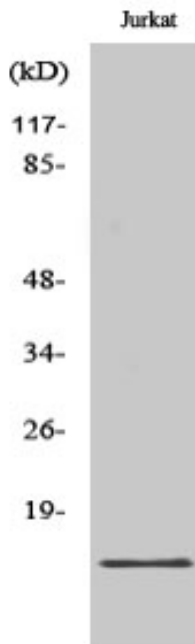
Catalog No	YP-Ab-00489
Isotype	IgG
Reactivity	Human;Mouse;Rat
Applications	WB;IHC;IF;ELISA
Gene Name	PDRG1
Protein Name	p53 and DNA damage-regulated protein 1
Immunogen	The antiserum was produced against synthesized peptide derived from human PDRG1. AA range:58-107
Specificity	PDRG1 Polyclonal Antibody detects endogenous levels of PDRG1 protein.
Formulation	Liquid in PBS containing 50% glycerol, 0.5% BSA and 0.02% sodium azide.
Source	Polyclonal, Rabbit,IgG
Purification	The antibody was affinity-purified from rabbit antiserum by affinity-chromatography using epitope-specific immunogen.
Dilution	WB: 1/500 - 1/2000. IHC: 1/100 - 1/300. ELISA: 1/40000.. IF 1:50-200
Concentration	1 mg/ml
Purity	≥90%
Storage Stability	-20°C/1 year
Synonyms	PDRG1; C20orf126; PDRG; p53 and DNA damage-regulated protein 1
Observed Band	19kD
Cell Pathway	Cytoplasm .
Tissue Specificity	Predominantly expressed in normal testis and exhibits reduced but detectable expression in other organs.
Function	function:May play a role in chaperone-mediated protein folding .,induction:By UV and repressed by TP53/p53.,similarity:Belongs to the prefoldin subunit beta family.,tissue specificity:Predominantly expressed in normal testis and exhibits reduced but detectable expression in other organs.,
Background	function:May play a role in chaperone-mediated protein folding .,induction:By UV and repressed by TP53/p53.,similarity:Belongs to the prefoldin subunit beta family.,tissue specificity:Predominantly expressed in normal testis and exhibits reduced but detectable expression in other organs.,
matters needing attention	Avoid repeated freezing and thawing!



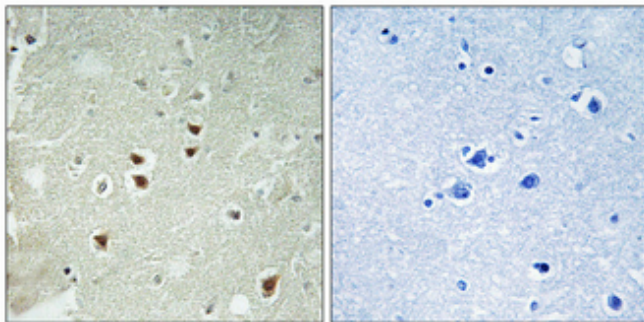
Usage suggestions

This product can be used in immunological reaction related experiments. For more information, please consult technical personnel.

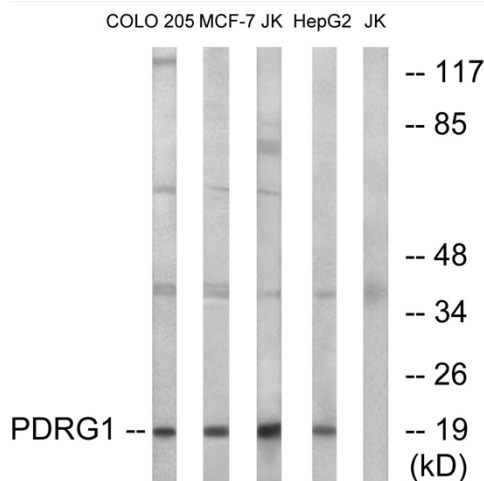
Products Images



Western Blot analysis of various cells using PDRG1 Polyclonal Antibody



Immunohistochemical analysis of paraffin-embedded Human brain. Antibody was diluted at 1:100(4° overnight). High-pressure and temperature Tris-EDTA,pH8.0 was used for antigen retrieval. Negative contrl (right) obtained from antibody was pre-absorbed by immunogen peptide.



Western blot analysis of lysates from Jurkat, COLO, MCF-7, and HepG2 cells, using PDRG1 Antibody. The lane on the right is blocked with the synthesized peptide.